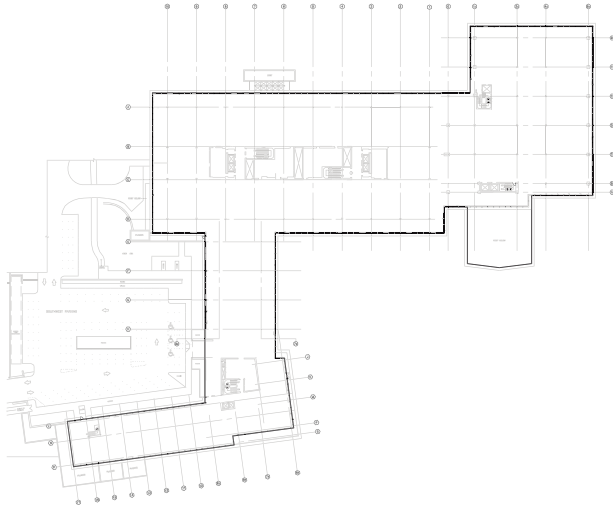
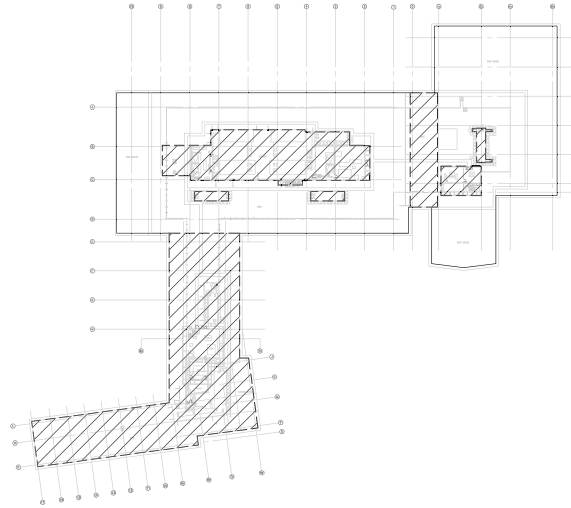


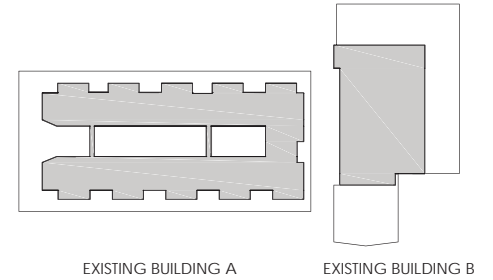
EXISTING BUILDING  
425,370 GROSS SQUARE FEET



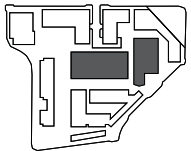
PROPOSED DEMOLITION  
173,055 GROSS SQUARE FEET

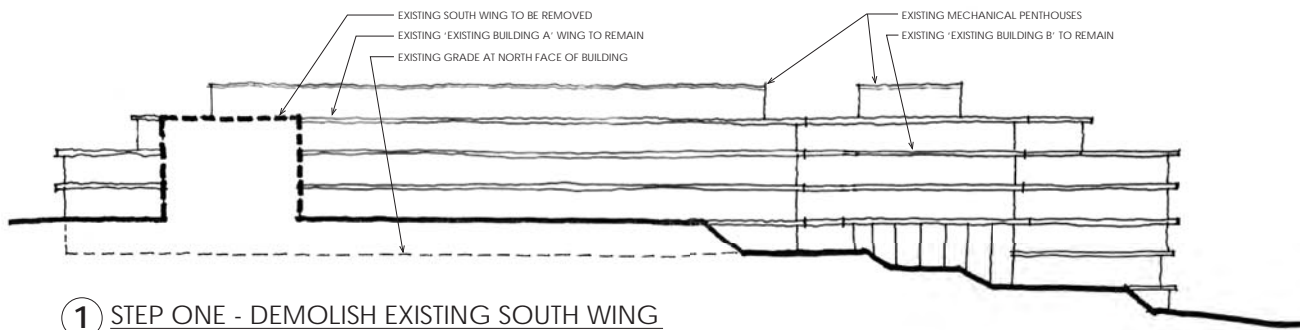


PROPOSED BUILDINGS  
386,590 GROSS SQUARE FEET TOTAL

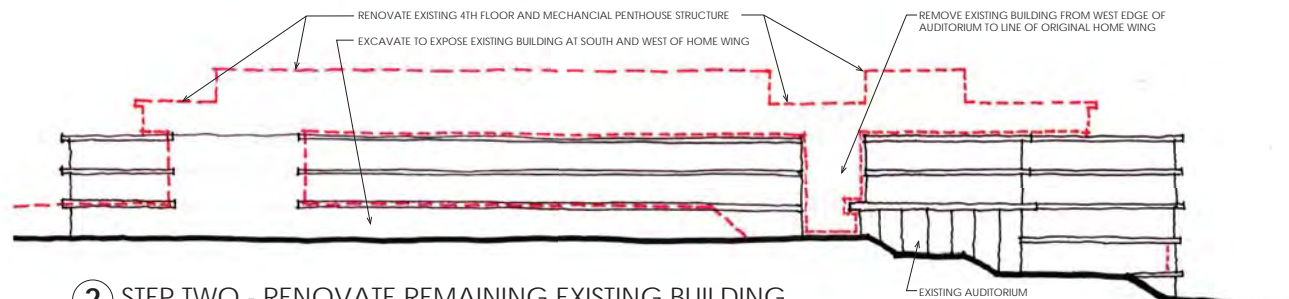


- EXISTING
- PROPOSED DEMOLITION
- PROPOSED ADDITION

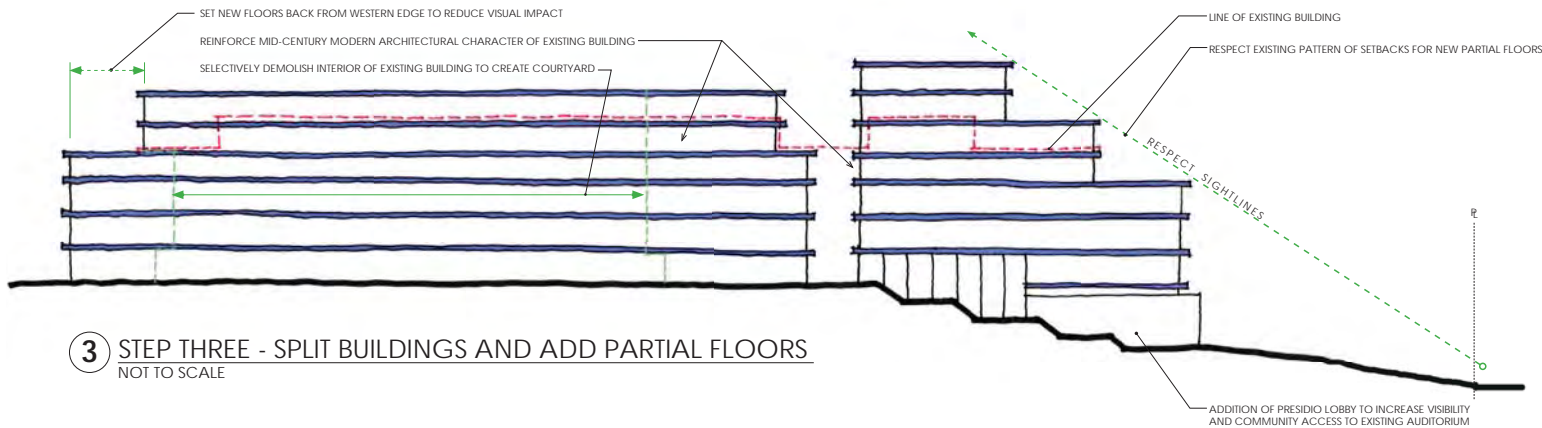




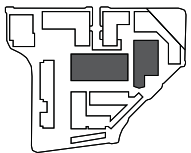
**1 STEP ONE - DEMOLISH EXISTING SOUTH WING**  
NOT TO SCALE



**2 STEP TWO - RENOVATE REMAINING EXISTING BUILDING**  
NOT TO SCALE



**3 STEP THREE - SPLIT BUILDINGS AND ADD PARTIAL FLOORS**  
NOT TO SCALE



**3333 CALIFORNIA STREET** SAN FRANCISCO, CA

**ADAPTIVE REUSE STRATEGY**



JAMES  
CORNER  
FIELD  
OPERATIONS



ARUP **BAR** architects

**JENSEN**



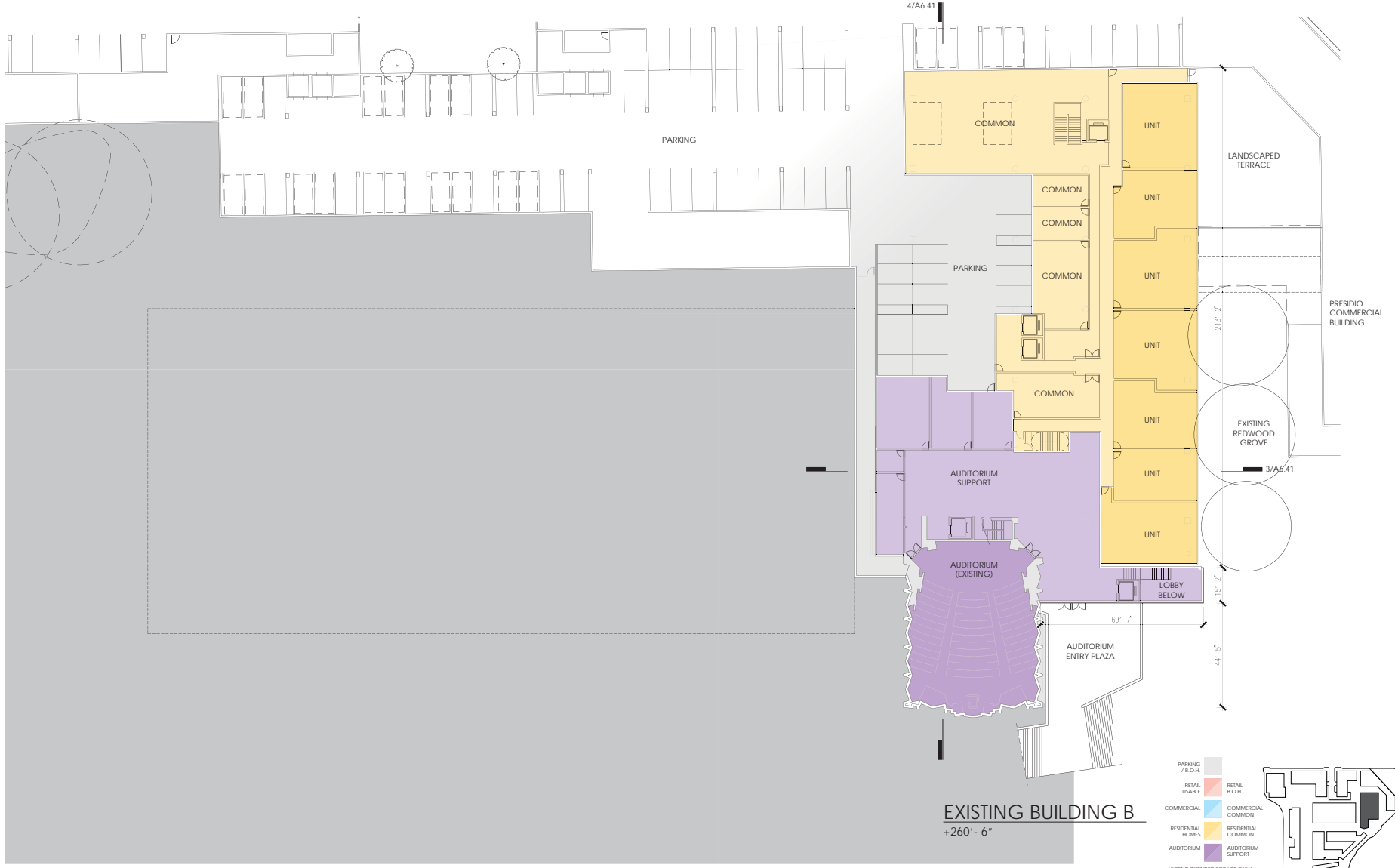
03.23.16  
PPA/EEA SET

**A6.01**



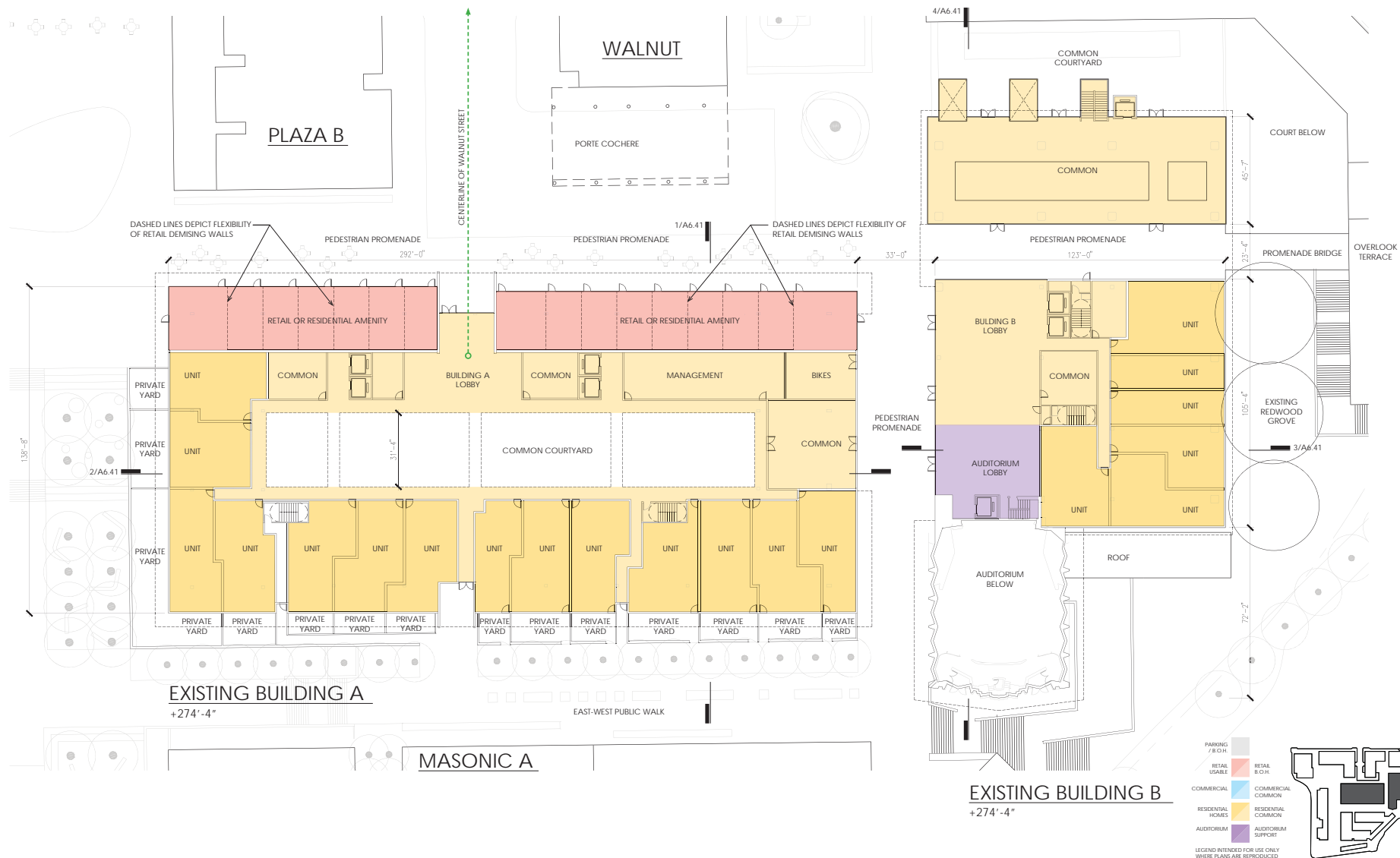






3333 CALIFORNIA STREET SAN FRANCISCO, CA

EXISTING BUILDING B LEVEL B1 PLAN



3333 CALIFORNIA STREET SAN FRANCISCO, CA

EXISTING BUILDINGS A + B LEVEL L1 PLANS



3333 CALIFORNIA STREET SAN FRANCISCO, CA



3333 CALIFORNIA STREET SAN FRANCISCO, CA





3333 CALIFORNIA STREET SAN FRANCISCO, CA



JAMES  
CORNER  
FIELD  
OPERATIONS



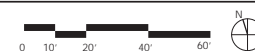
ARUP **BAR** architects

**JENSEN**



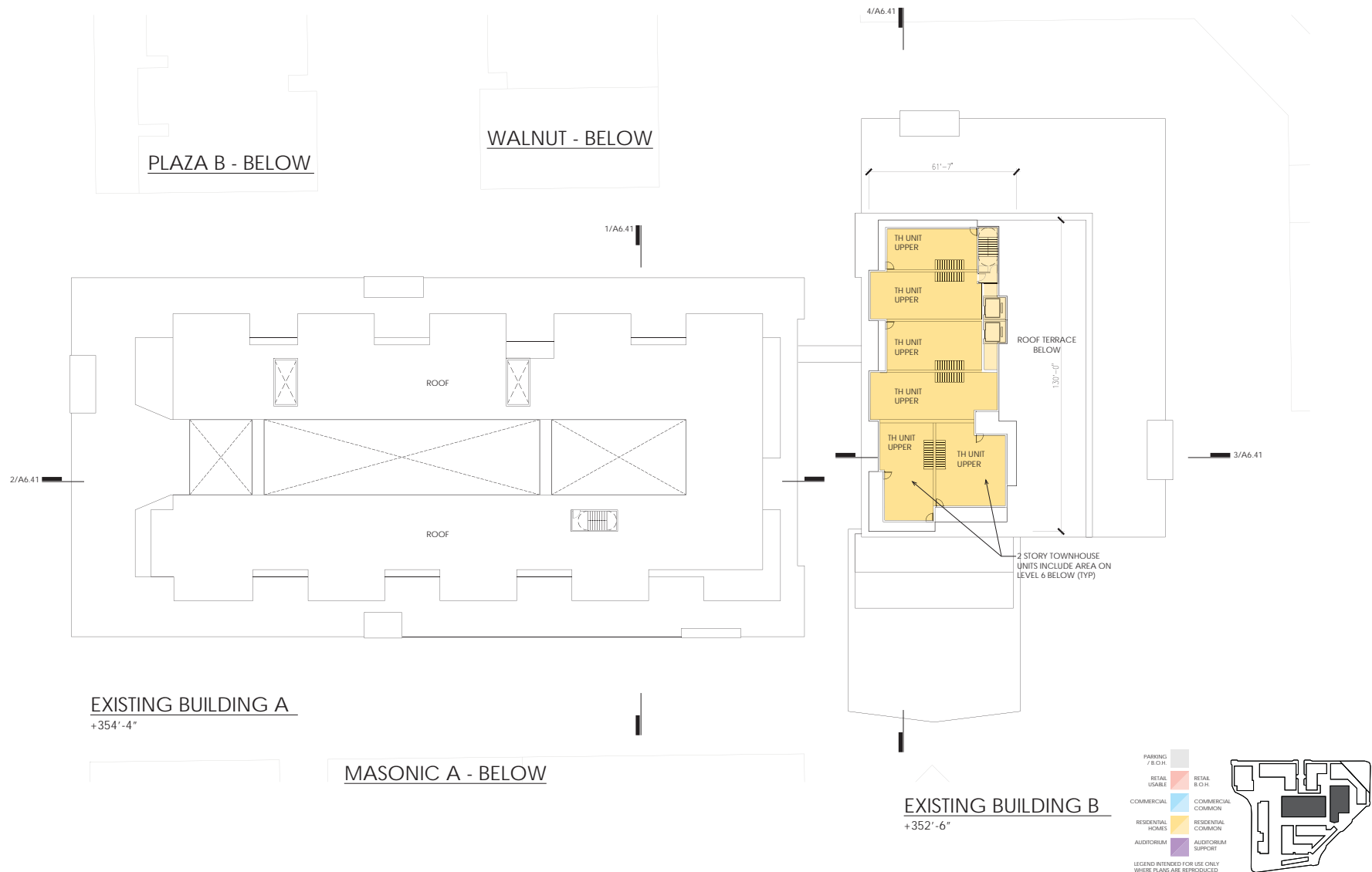
EXISTING BUILDINGS A + B LEVEL L5 PLANS

03.23.16  
PPA/EEA SET



**A6.17**





3333 CALIFORNIA STREET SAN FRANCISCO, CA



JAMES  
CORNER  
FIELD  
OPERATIONS



ARUP BAR architects

JENSEN

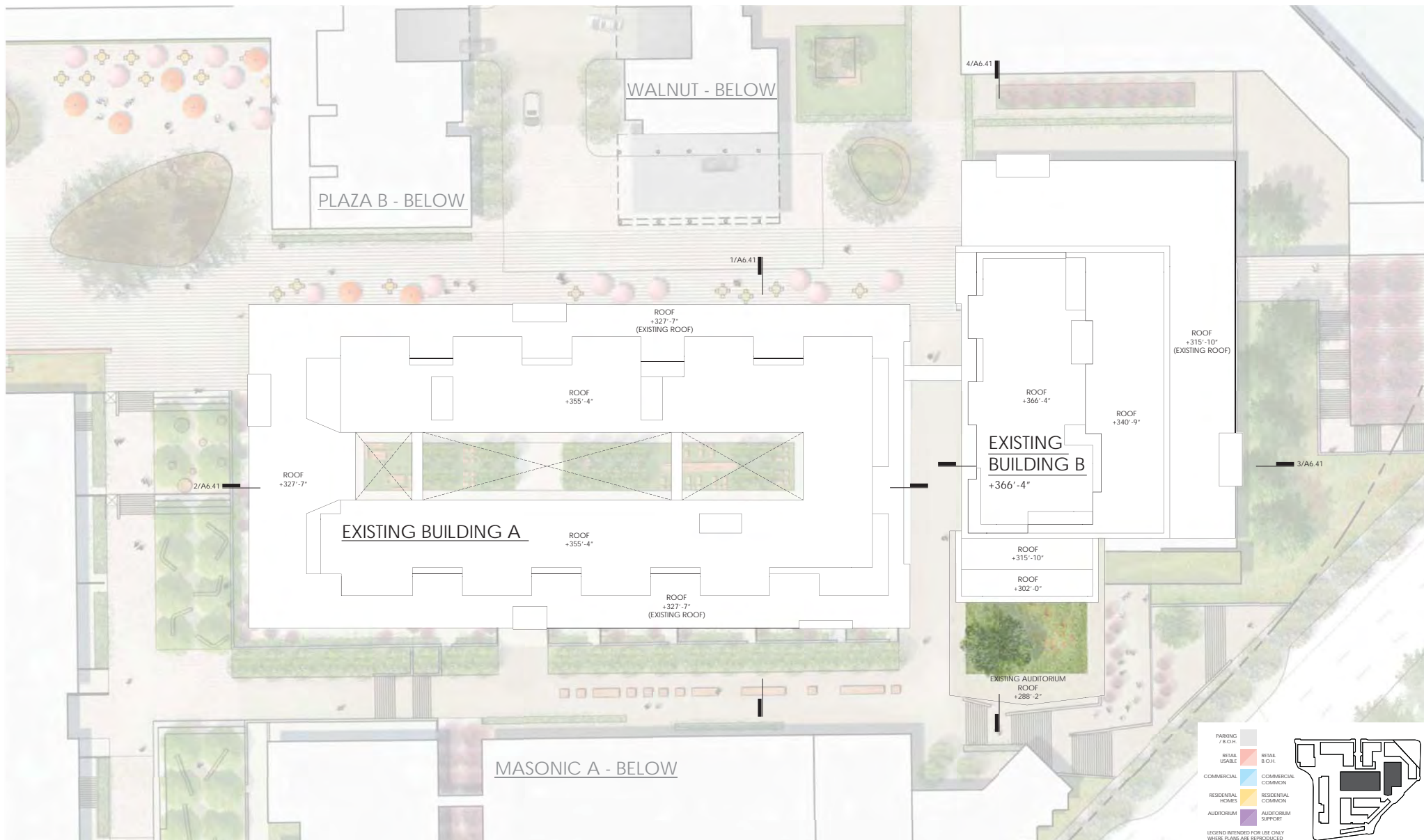


03.23.16  
PPA/EEA SET



A6.19



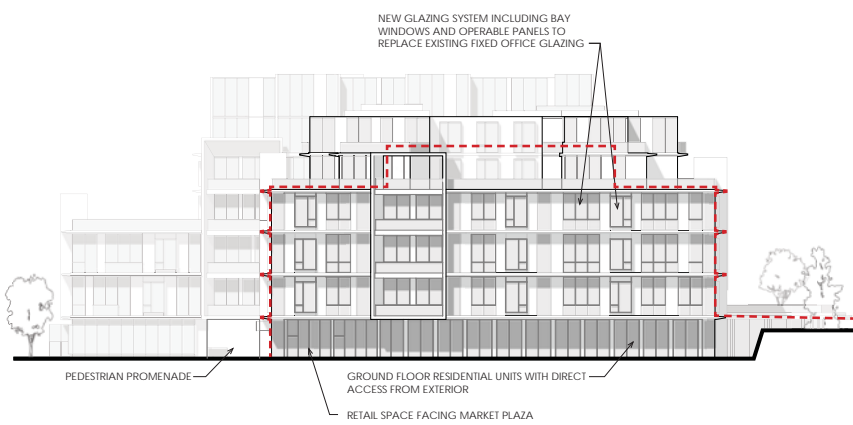


**3333 CALIFORNIA STREET** SAN FRANCISCO, CA

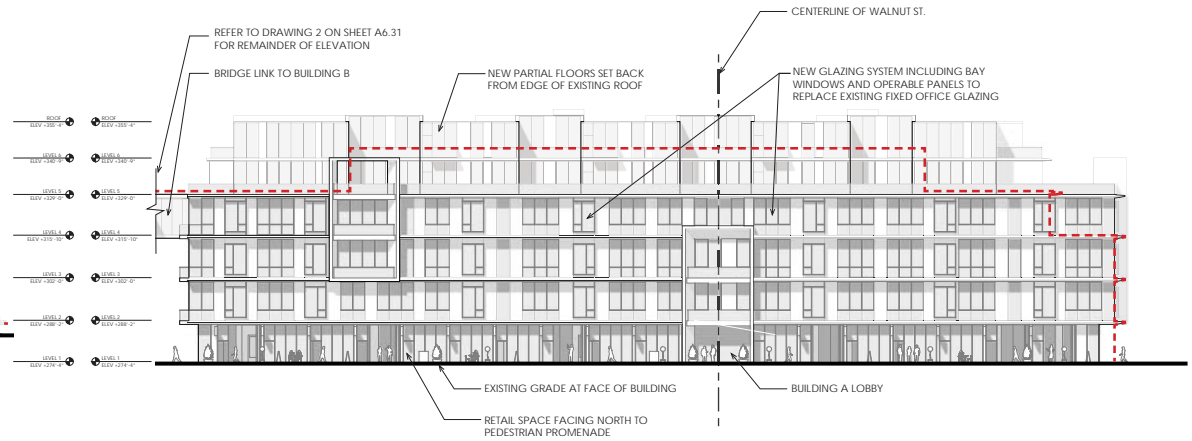
**EXISTING BUILDINGS A + B ROOF PLANS**



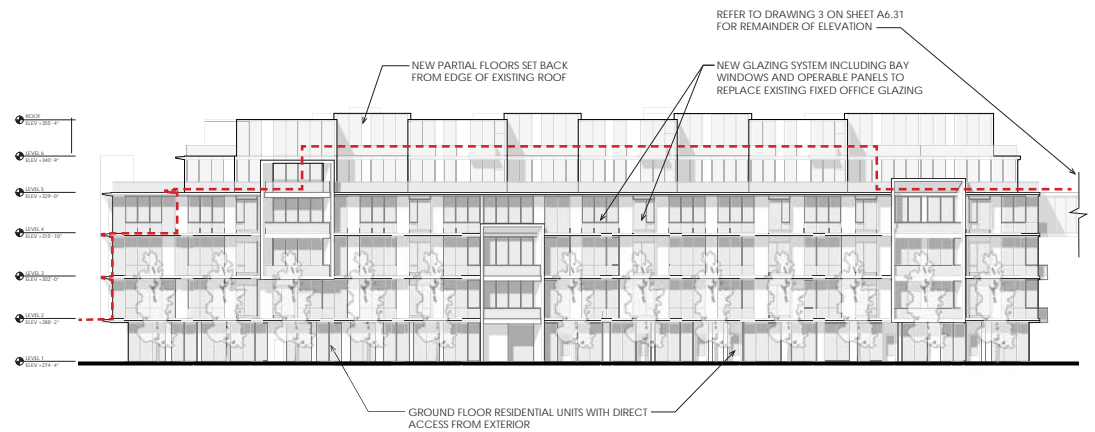
**A6.20**



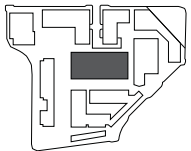
① WEST ELEVATION  
1" = 20'-0"



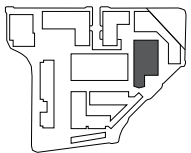
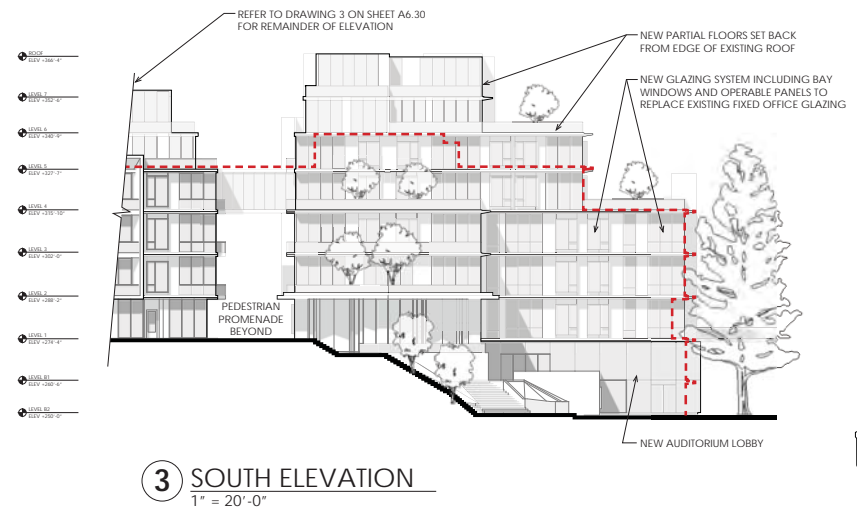
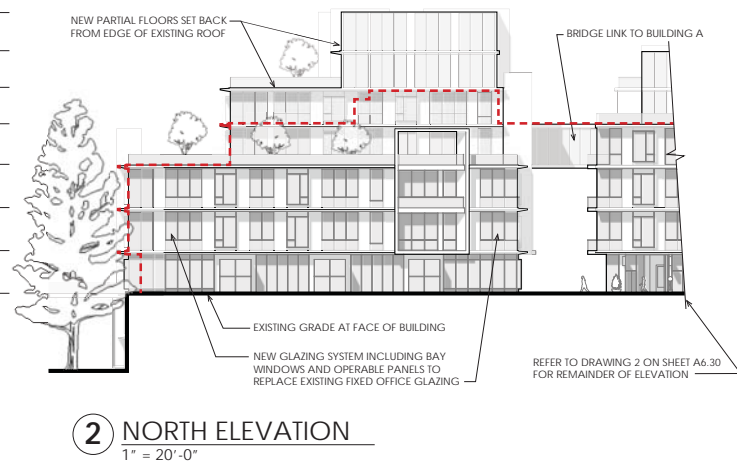
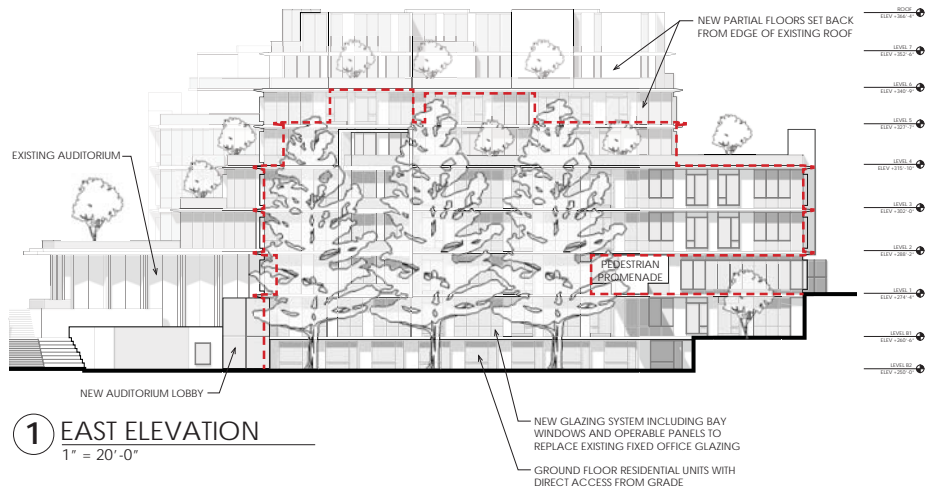
② NORTH ELEVATION  
1" = 20'-0"



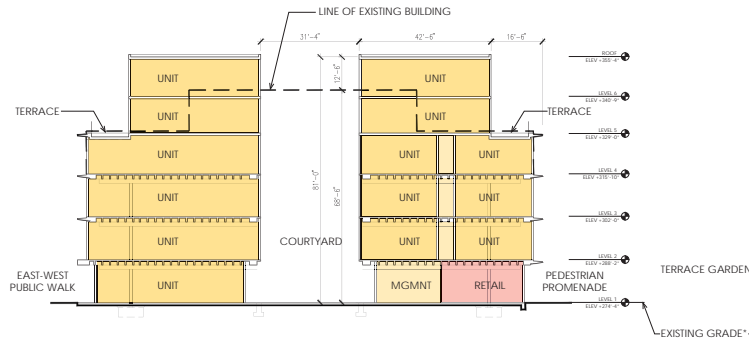
③ SOUTH ELEVATION  
1" = 20'-0"



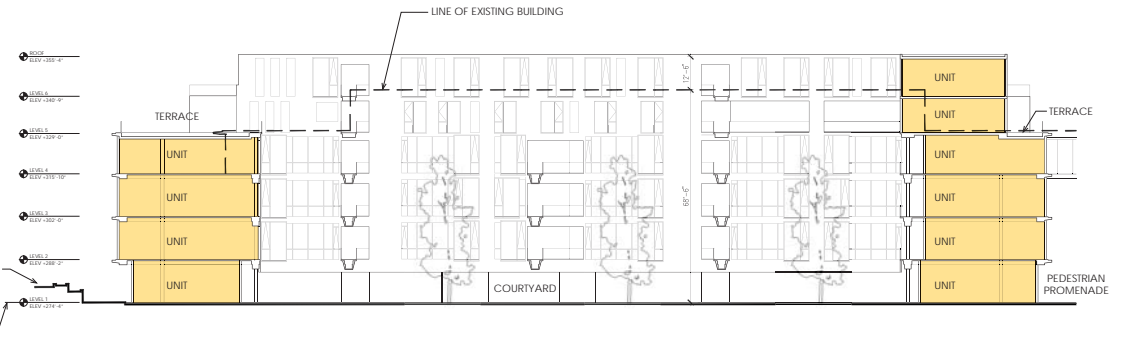
3333 CALIFORNIA STREET SAN FRANCISCO, CA



3333 CALIFORNIA STREET SAN FRANCISCO, CA

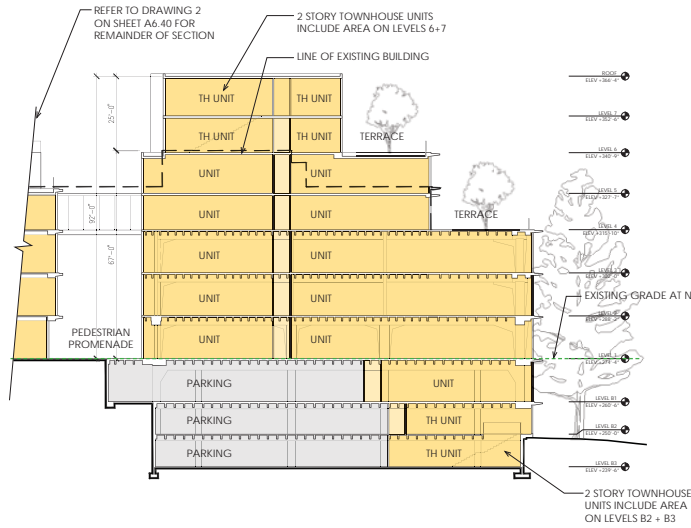


**1 NORTH-SOUTH SECTION BUILDING A**  
1" = 20'-0"

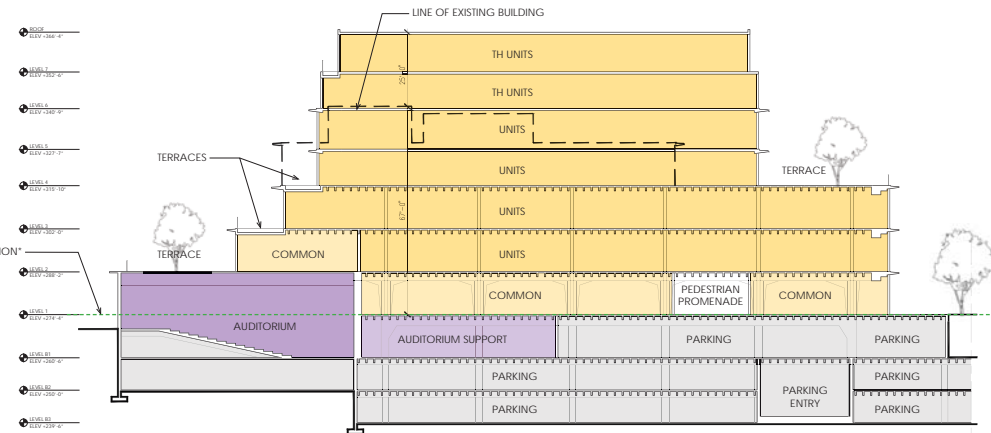


**2 EAST-WEST SECTION BUILDING A**  
1" = 20'-0"

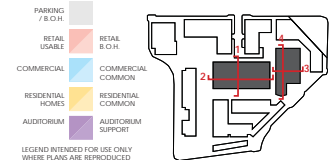
\*DUE TO ITS POSITIONING AT THE CENTER PART OF THE SITE THE EXISTING BUILDING HEIGHT IS MEASURED FROM EXISTING GRADE AT THE BASE OF THE BUILDING AT THE NORTHERN ELEVATION (+274'-4"). REFER SF PLANNING CODE SECTIONS 260(a)(1)(C) and 260(a)(1)(D).



**3 EAST-WEST SECTION BUILDING B**  
1" = 20'-0"



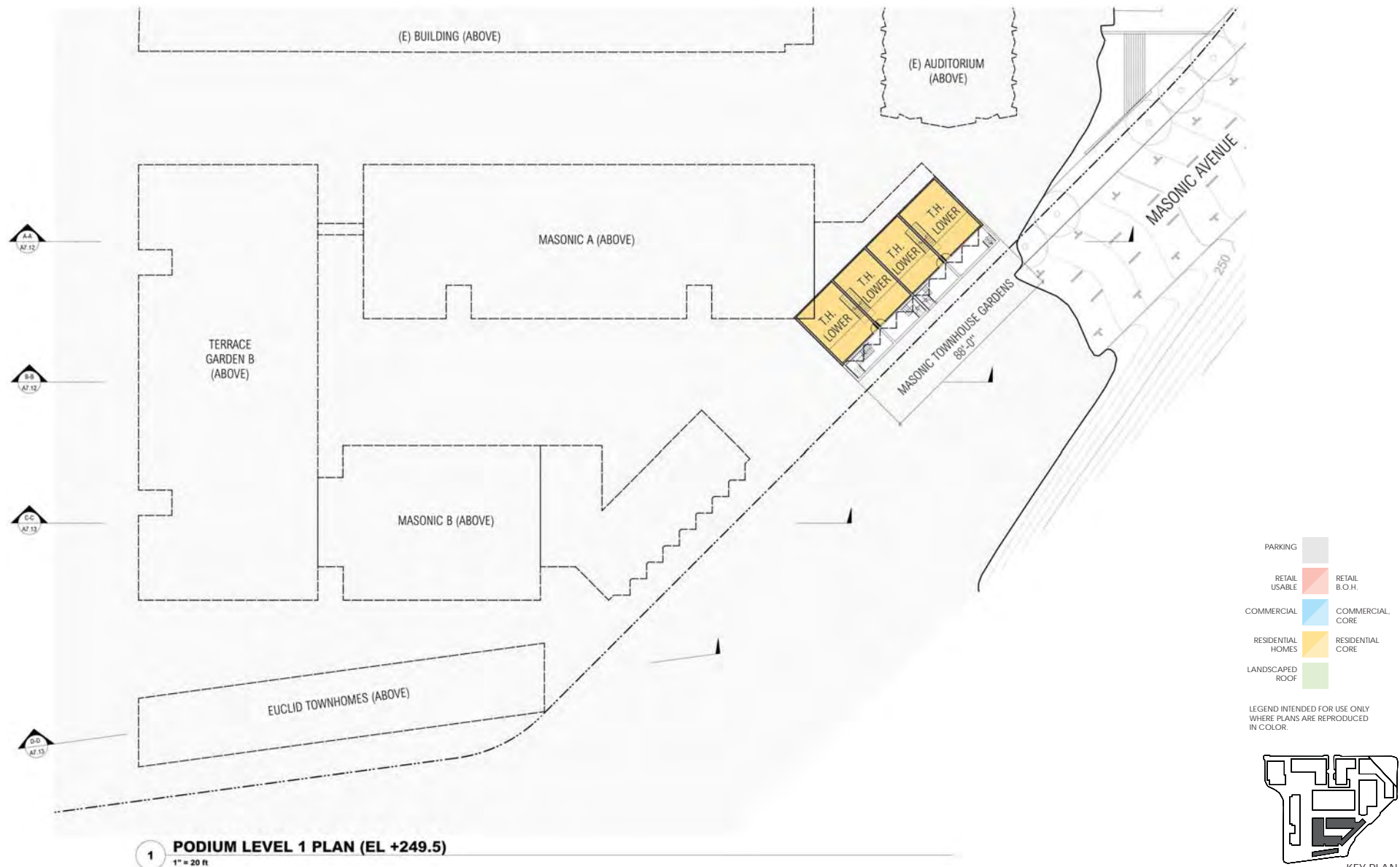
**4 NORTH-SOUTH SECTION BUILDING B**  
1" = 20'-0"



**3333 CALIFORNIA STREET** SAN FRANCISCO, CA

EXISTING BUILDINGS A + B SECTIONS

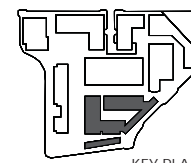
**A6.40**

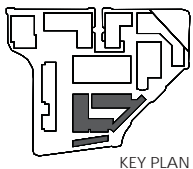
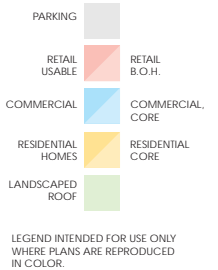


3333 CALIFORNIA STREET SAN FRANCISCO, CA

MASONIC AND EUCLID BUILDING PLANS - PODIUM LEVEL 1







3333 CALIFORNIA STREET SAN FRANCISCO, CA

MASONIC AND EUCLID BUILDING PLANS - LEVEL 1

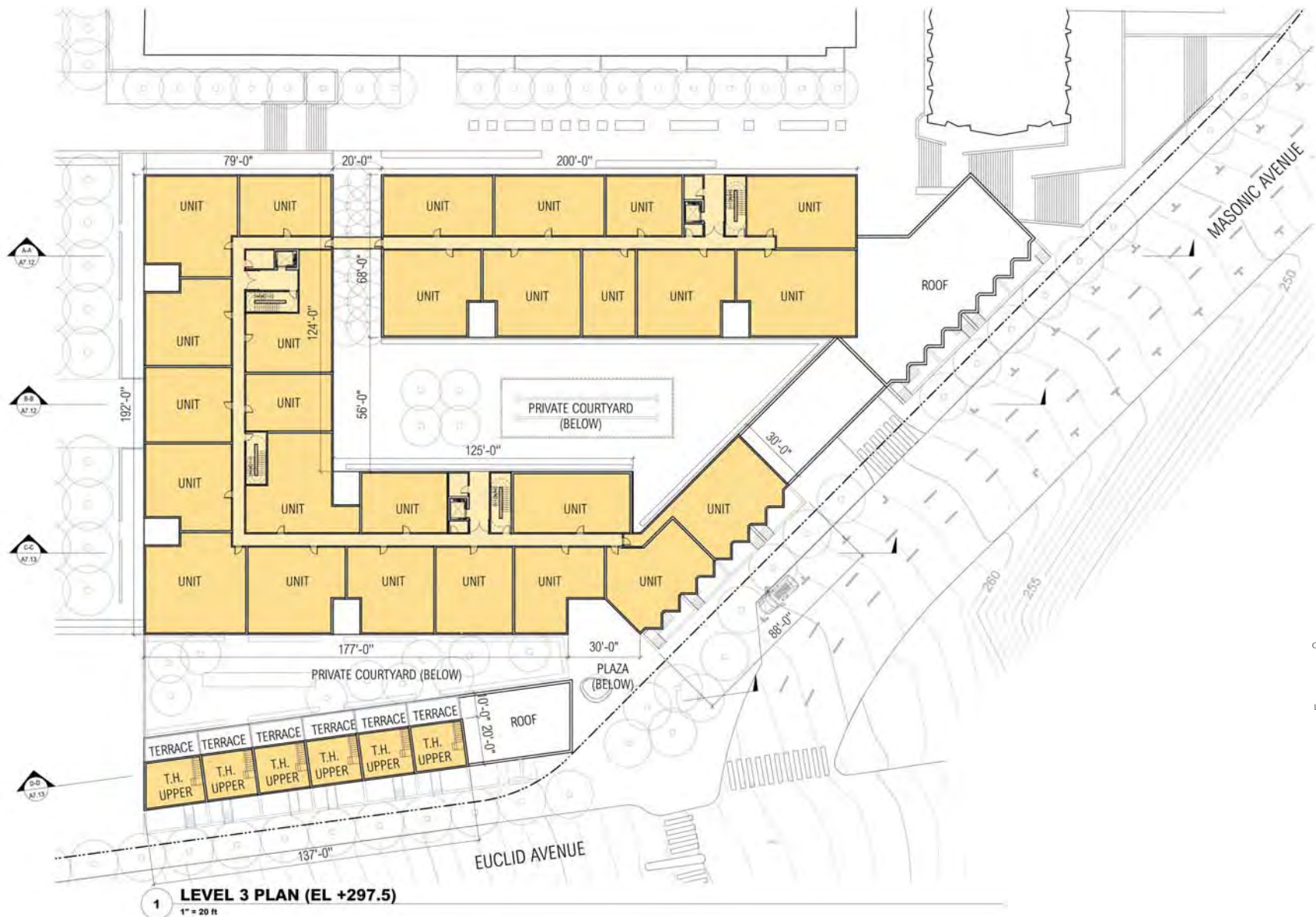




**3333 CALIFORNIA STREET** SAN FRANCISCO, CA

**MASONIC AND EUCLID BUILDING PLANS - LEVEL 2**





3333 CALIFORNIA STREET SAN FRANCISCO, CA

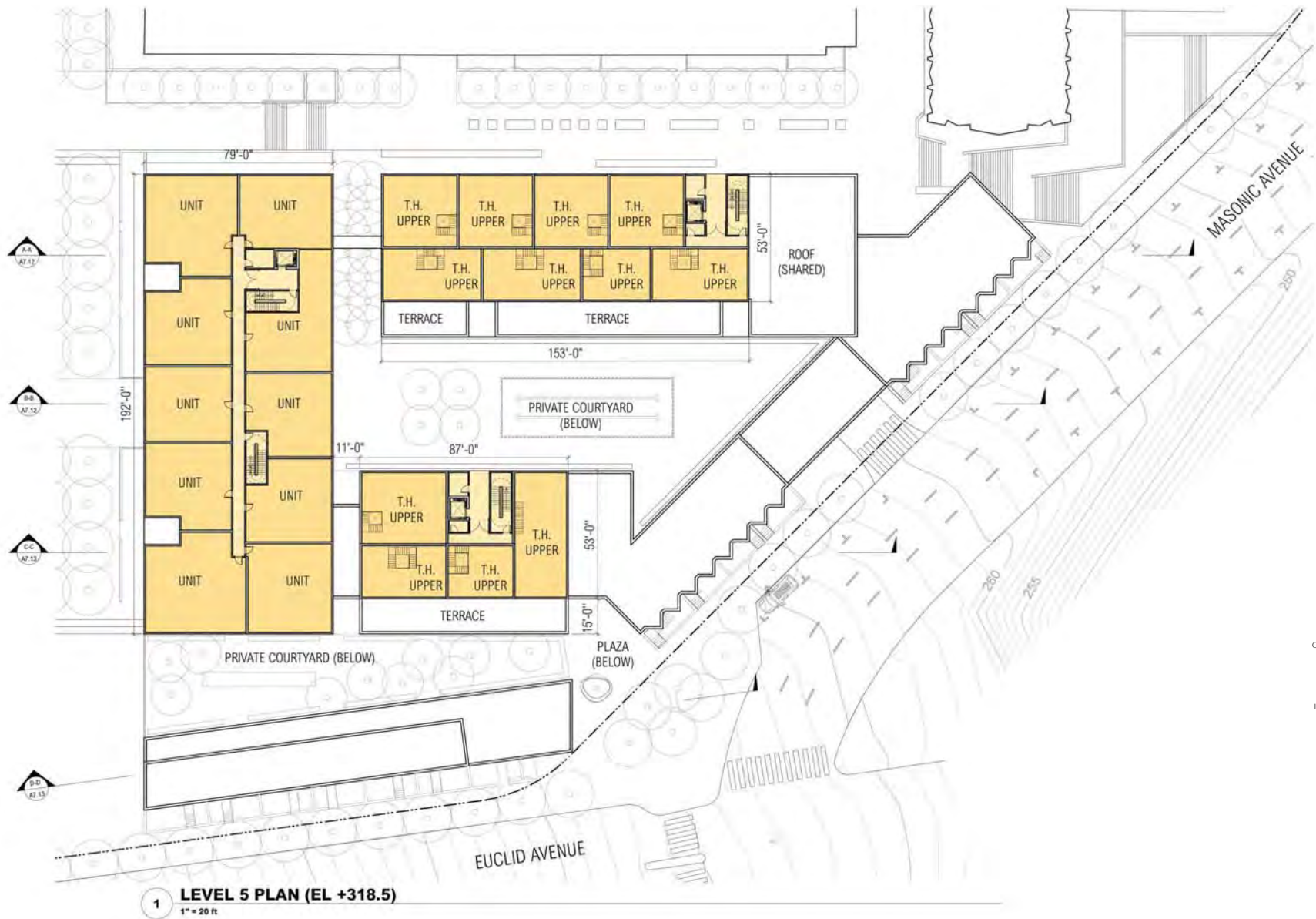
MASONIC AND EUCLID BUILDING PLANS - LEVEL 3



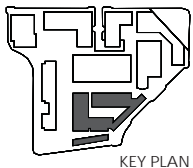
**3333 CALIFORNIA STREET** SAN FRANCISCO, CA

**MASONIC AND EUCLID BUILDING PLANS - LEVEL 4**





- |                 |                  |                   |
|-----------------|------------------|-------------------|
| PARKING         | RETAIL USABLE    | RETAIL B.O.H.     |
| COMMERCIAL      | COMMERCIAL CORE  | RESIDENTIAL HOMES |
| LANDSCAPED ROOF | RESIDENTIAL CORE |                   |
- LEGEND INTENDED FOR USE ONLY WHERE PLANS ARE REPRODUCED IN COLOR.



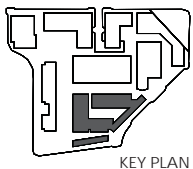
**3333 CALIFORNIA STREET** SAN FRANCISCO, CA

**MASONIC AND EUCLID BUILDING PLANS - LEVEL 5**



PARKING		RETAIL B.O.H.
RETAIL USABLE		COMMERCIAL CORE
COMMERCIAL		RESIDENTIAL CORE
RESIDENTIAL HOMES		
LANDSCAPED ROOF		

LEGEND INTENDED FOR USE ONLY WHERE PLANS ARE REPRODUCED IN COLOR.



3333 CALIFORNIA STREET SAN FRANCISCO, CA

MASONIC AND EUCLID BUILDING PLANS - LEVEL 6



JAMES CORNER  
FIELD OPERATIONS

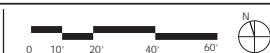


ARUP BAR architects

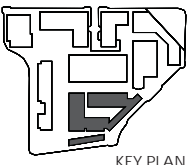
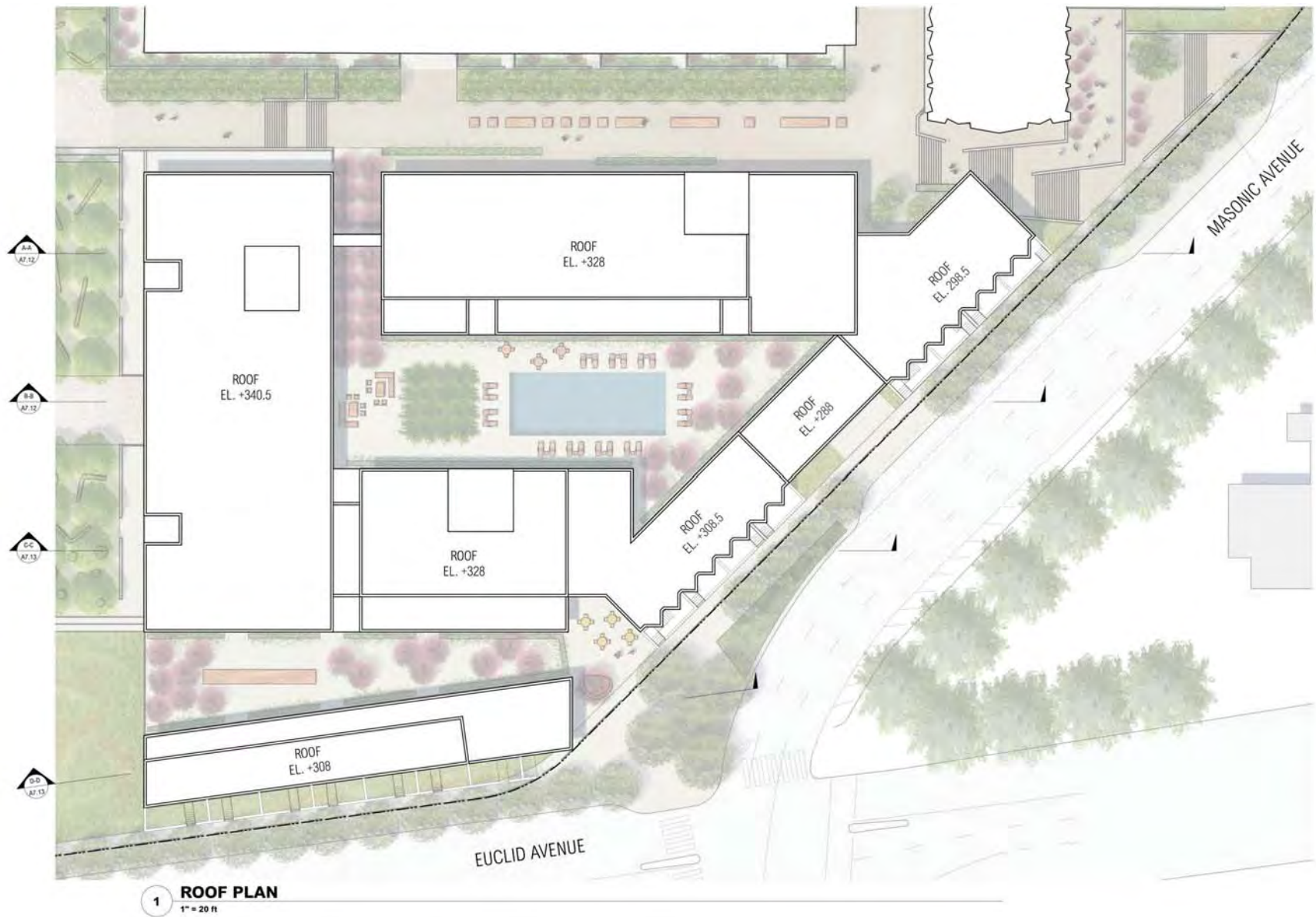
JENSEN



03.23.16  
PPA/EEA SET



A7.08



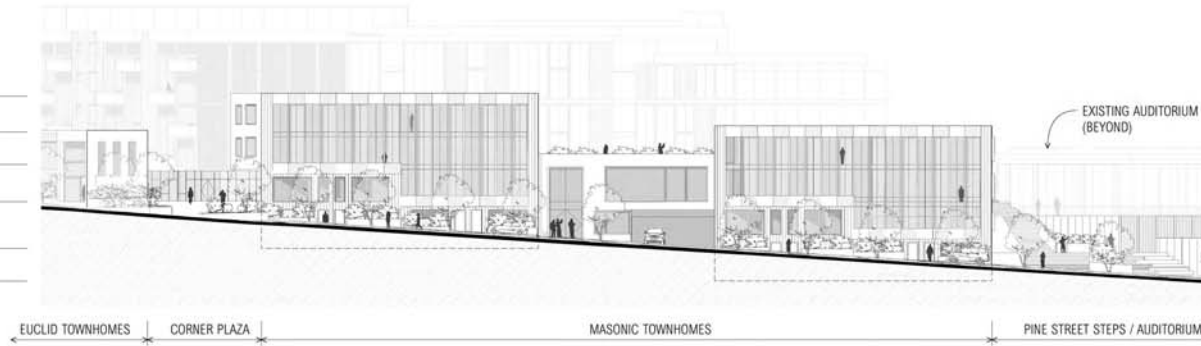
KEY PLAN

3333 CALIFORNIA STREET SAN FRANCISCO, CA

MASONIC AND EUCLID ROOF PLAN



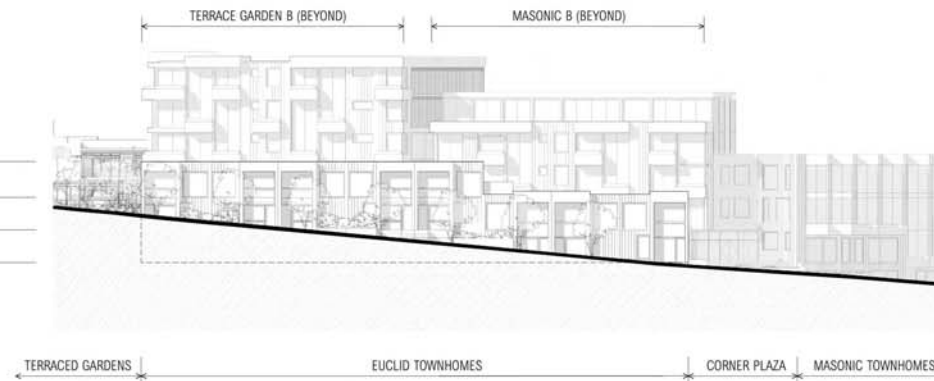
- ROOF  
ELEV. +308.5
- LEVEL 3  
ELEV. +297.5
- LEVEL 2  
ELEV. +287
- LEVEL 1  
ELEV. +275
- PODIUM LEVEL 2  
ELEV. +260
- PODIUM LEVEL 1  
ELEV. +249.5



**2 EAST ELEVATION**  
1" = 20 ft

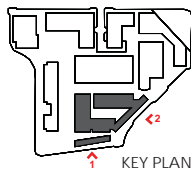
- ROOF  
ELEV. +298.5
- LEVEL 2  
ELEV. +287
- LEVEL 1  
ELEV. +275
- PODIUM LEVEL 2  
ELEV. +260
- PODIUM LEVEL 1  
ELEV. +249.5

- ROOF  
ELEV. +308
- LEVEL 3  
ELEV. +296
- LEVEL 2  
ELEV. +285.5
- LEVEL 1  
ELEV. +275



**1 SOUTH ELEVATION**  
1" = 20 ft

- ROOF  
ELEV. +340.5
- LEVEL 6  
ELEV. +329
- LEVEL 5  
ELEV. +318.5
- LEVEL 4  
ELEV. +308
- LEVEL 3  
ELEV. +297.5
- LEVEL 2  
ELEV. +287
- LEVEL 1  
ELEV. +275



**3333 CALIFORNIA STREET** SAN FRANCISCO, CA



03.23.16  
PPA/EEA SET

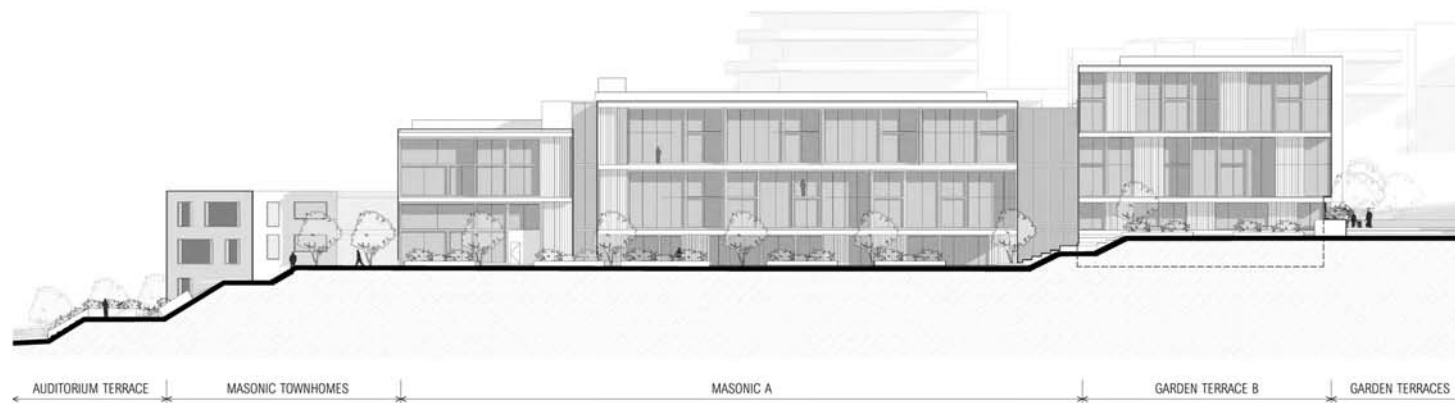
MASONIC AND EUCLID ELEVATIONS

**A7.10**



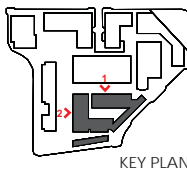
**2 WEST ELEVATION**  
1" = 20 ft

ROOF
ELEV. +340.5
LEVEL 6
ELEV. +329
LEVEL 5
ELEV. +318.5
LEVEL 4
ELEV. +308
LEVEL 3
ELEV. +297.5
LEVEL 2
ELEV. +287
LEVEL 1
ELEV. +275



**1 NORTH ELEVATION**  
1" = 20 ft

ROOF
ELEV. +340.5
LEVEL 6
ELEV. +329
LEVEL 5
ELEV. +318.5
LEVEL 4
ELEV. +308
LEVEL 3
ELEV. +297.5
LEVEL 2
ELEV. +287
LEVEL 1
ELEV. +275



**3333 CALIFORNIA STREET** SAN FRANCISCO, CA

**MASONIC AND EUCLID ELEVATIONS**



JAMES  
CORNER  
FIELD  
OPERATIONS

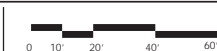


ARUP **BAR** architects

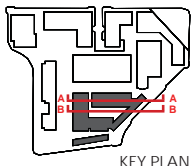
**JENSEN**



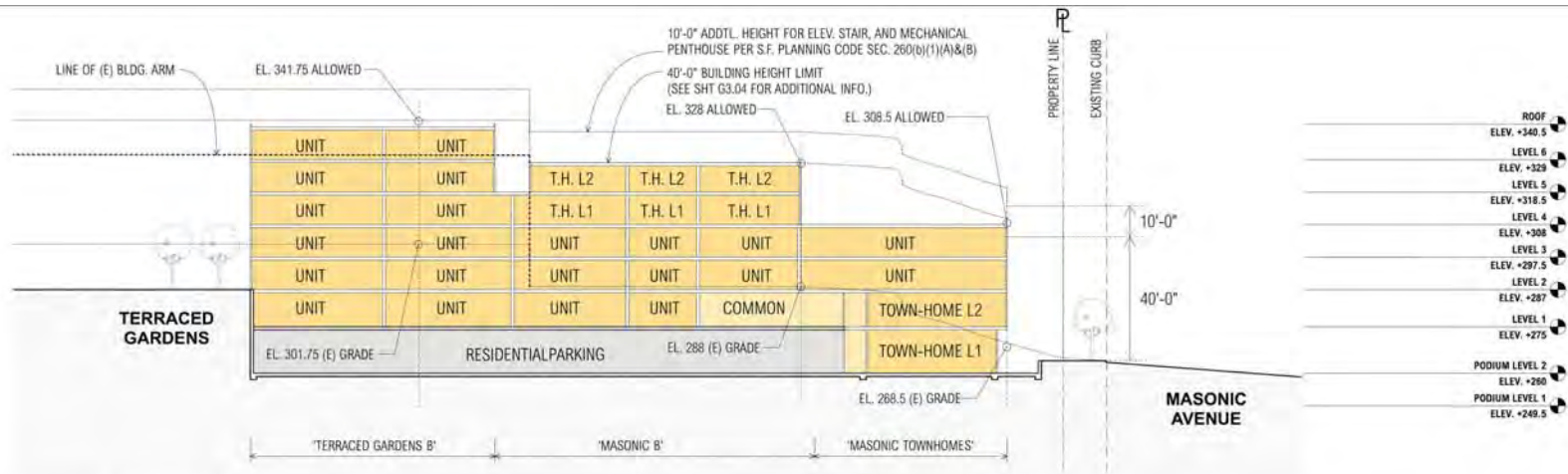
03.23.16  
PPA/EEA SET



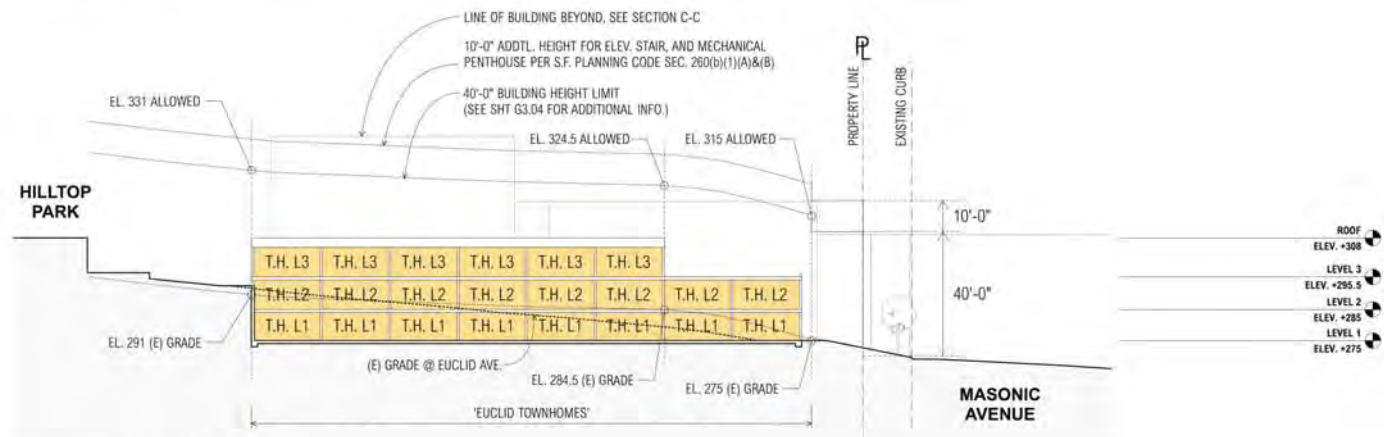
**A7.11**



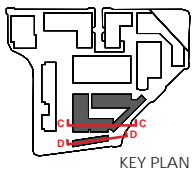
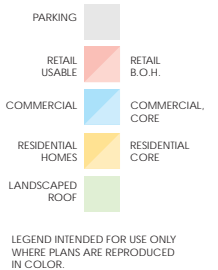




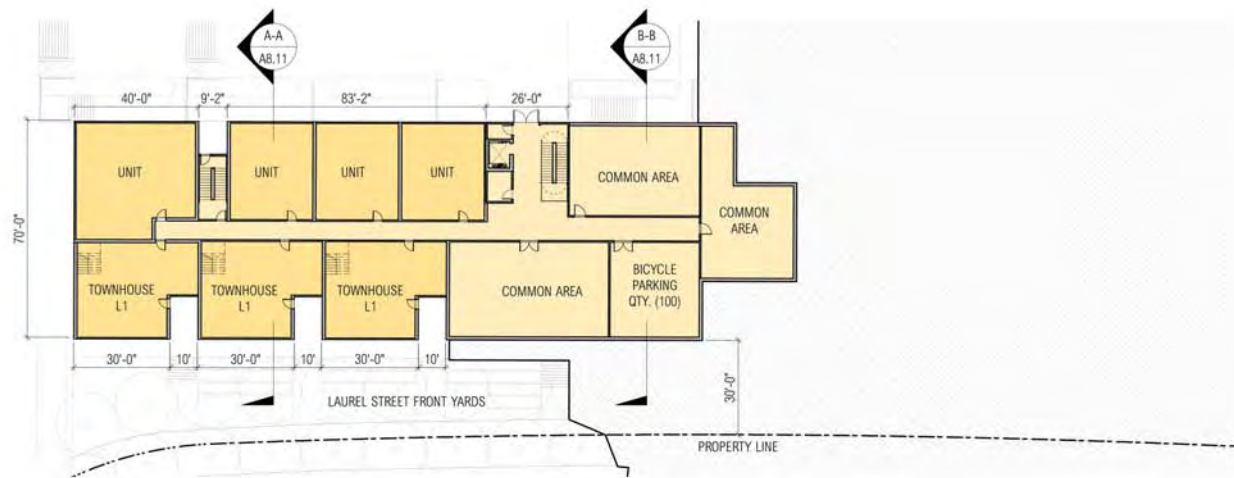
1 **SECTION C-C**  
1" = 20 ft



2 **SECTION D-D**  
1" = 20 ft



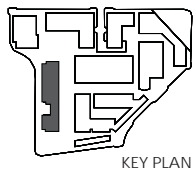
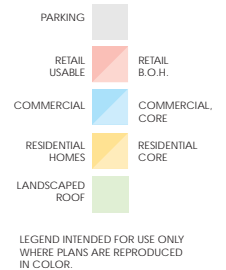
3333 CALIFORNIA STREET SAN FRANCISCO, CA



**2 FIRST FLOOR PLAN (+285.5)**  
1" = 20 ft



**1 PARKING LEVEL PLAN (+275)**  
1" = 20 ft



**3333 CALIFORNIA STREET** SAN FRANCISCO, CA

**LAUREL TOWNHOMES AND TERRACED GARDEN A FLOOR PLANS**



JAMES  
CORNER  
FIELD  
OPERATIONS



ARUP **BAR** architects

**JENSEN**



03.23.16  
PPA/EEA SET



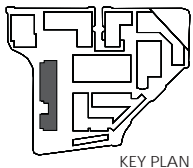
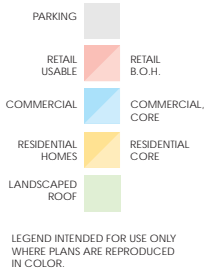
**A8.01**



**2 THIRD FLOOR PLAN (+306.5)**  
1" = 20 ft

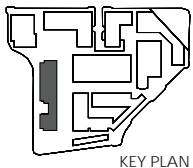
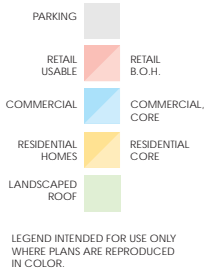
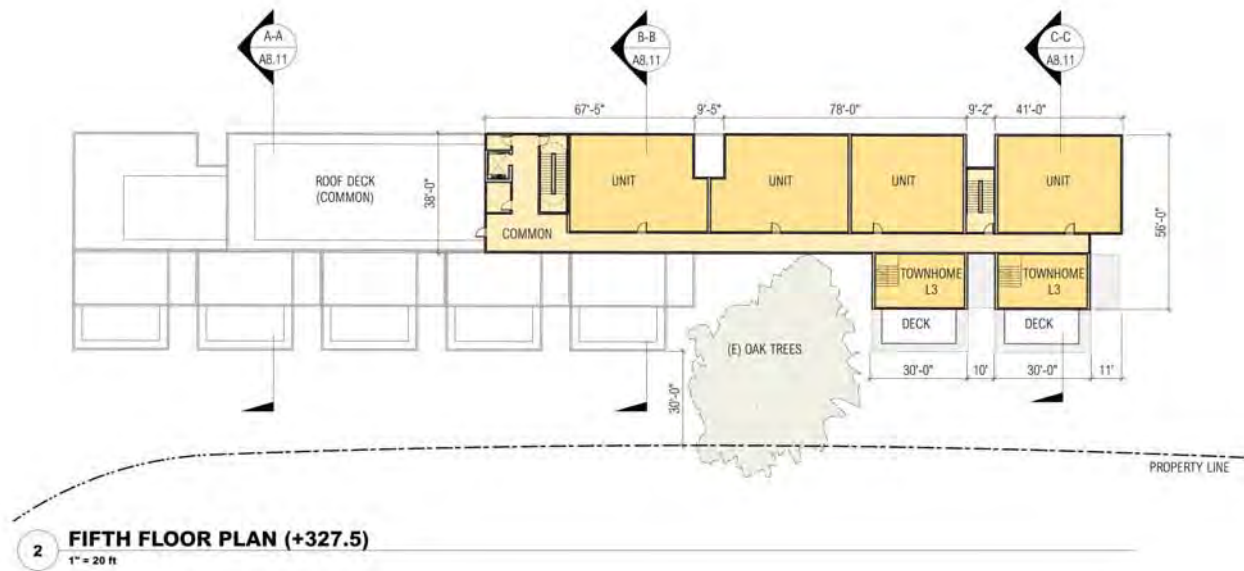


**1 SECOND FLOOR PLAN (+296)**  
1" = 20 ft



**3333 CALIFORNIA STREET** SAN FRANCISCO, CA

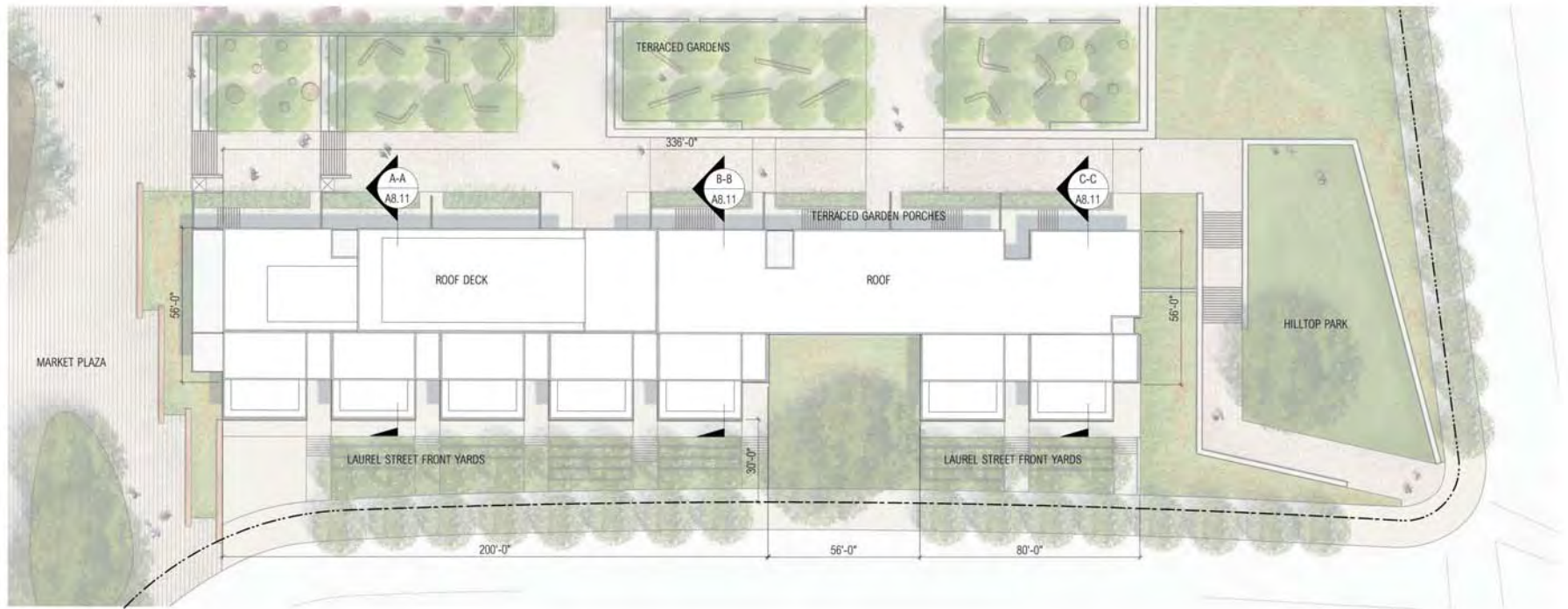
**LAUREL TOWNHOMES AND TERRACED GARDEN A FLOOR PLANS**



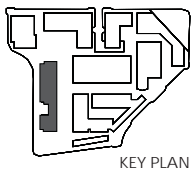
3333 CALIFORNIA STREET SAN FRANCISCO, CA

LAUREL TOWNHOMES AND TERRACED GARDEN A FLOOR PLANS





3 **ROOF PLAN**  
1" = 20 ft



**3333 CALIFORNIA STREET** SAN FRANCISCO, CA

**LAUREL TOWNHOMES AND TERRACED GARDEN A ROOF PLAN**



JAMES  
CORNER  
FIELD  
OPERATIONS



ARUP **BAR** architects

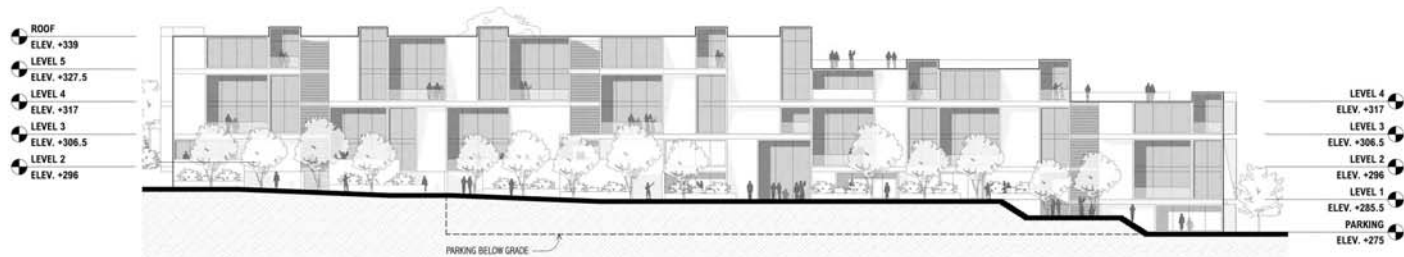
**JENSEN**



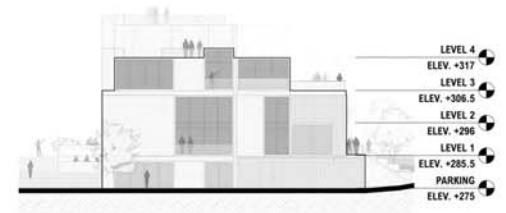
03.23.16  
PPA/EEA SET



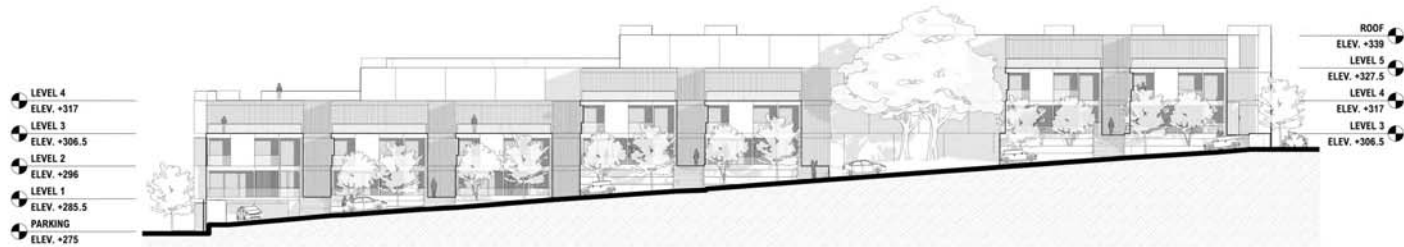
**A8.04**



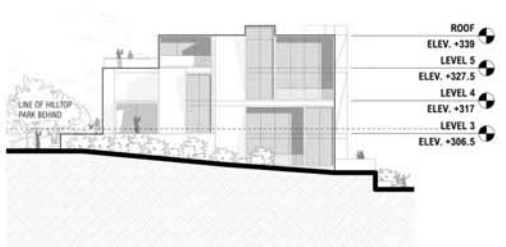
4 **EAST ELEVATION (TERRACED GARDEN A)**  
1" = 20 ft



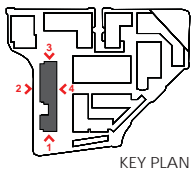
3 **NORTH ELEVATION**  
1" = 20 ft



2 **LAUREL WEST ELEVATION (LAUREL TOWNHOMES)**  
1" = 20 ft



1 **SOUTH ELEVATION**  
1" = 20 ft



KEY PLAN

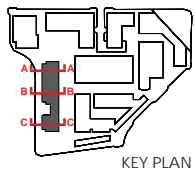
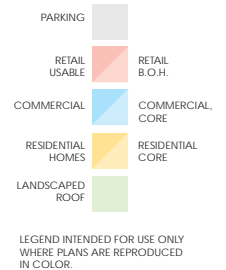
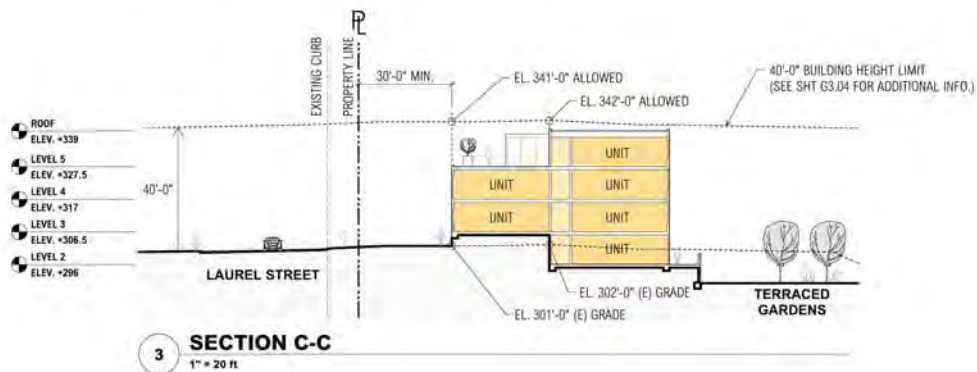
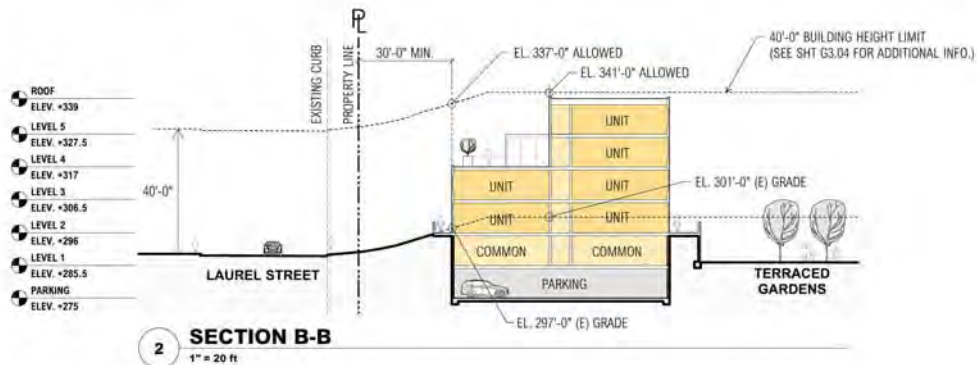
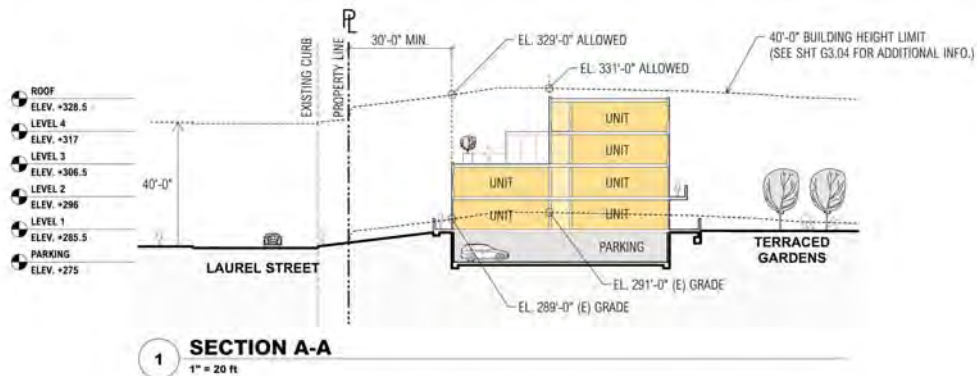
3333 CALIFORNIA STREET SAN FRANCISCO, CA



03.23.16  
PPA/EEA SET  
0 10' 20' 40' 60'

LAUREL ELEVATIONS

A8.10



3333 CALIFORNIA STREET SAN FRANCISCO, CA

LAUREL SECTIONS

A8.11